

IFMS Programme Risk Forum Presentation

30 August 2018

The IFMS logo is positioned on the left side of the slide. It consists of the letters 'IFMS' in a white, sans-serif font. Below the letters are four small, colored squares: orange, red, green, and yellow. The logo is set against a background of several horizontal, light gray lines that span the width of the slide.

IFMS

Presented by:

Thando Tshuma

- **IFMS Background**
- **Original IFMS 1 vs. Revised Solution Architecture**
- **Why IFMS**
- **Programme Roadmap**
- **IFMS Governance Structure**
- **IFMS Conceptual Architecture and Related Risks**

Background

IFMS

ORIGINAL PROJECT SCHEDULE

Phase I
Requirements
Specification

Phase II
Institutional capacity
building

2002
Budget council
approval to develop
strategy;

2004
Phase out of
FMS; URS and MSP
submitted to TCF;

2005
Cab memo
submitted
and approved;

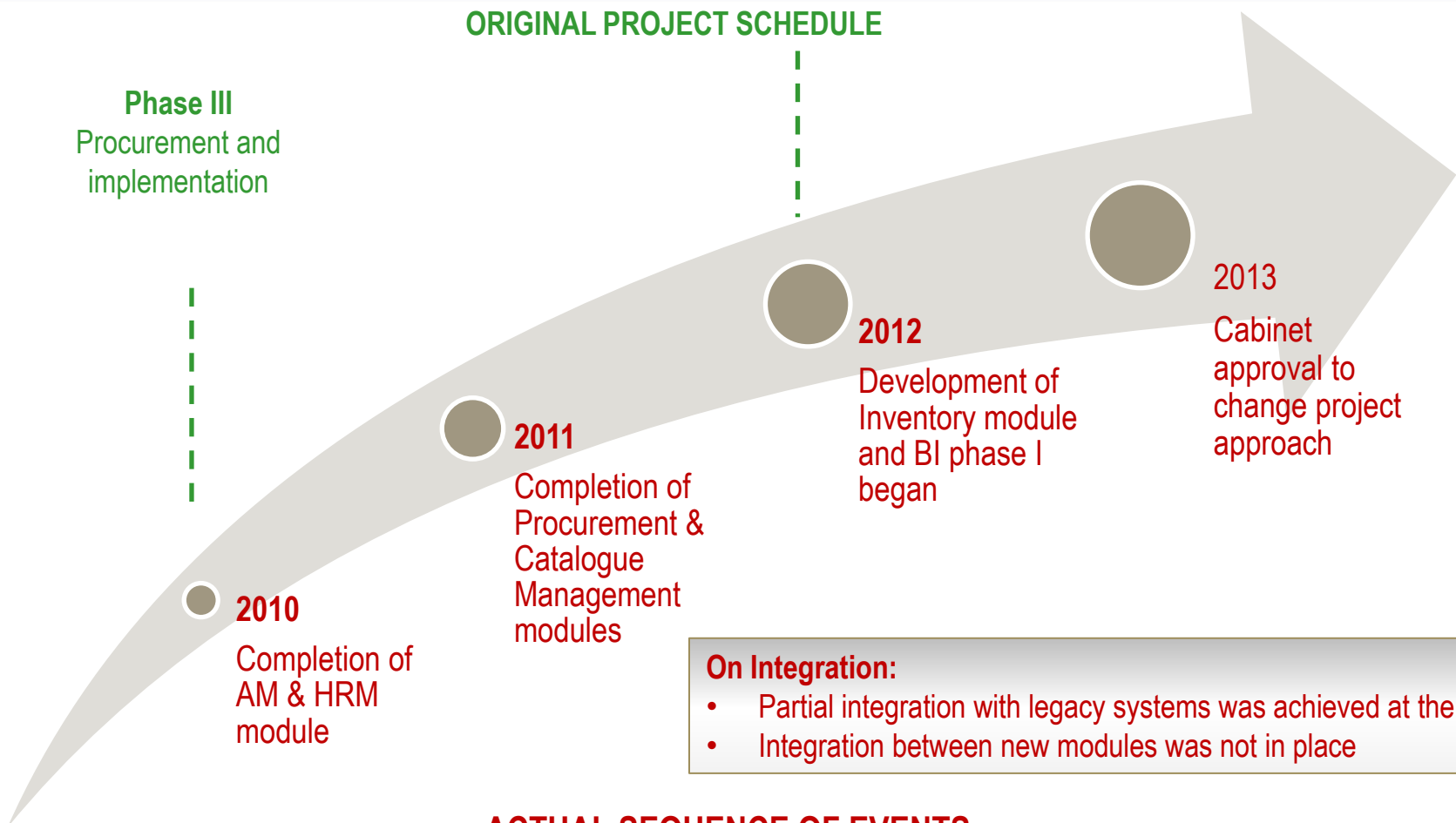
2006
Rescheduling of
project plan due to
institutional and project
challenges
experienced;

2007
Cabinet informed of
challenges and
amended plans

ACTUAL SEQUENCE OF EVENTS

Background (Cont.)

IFMS



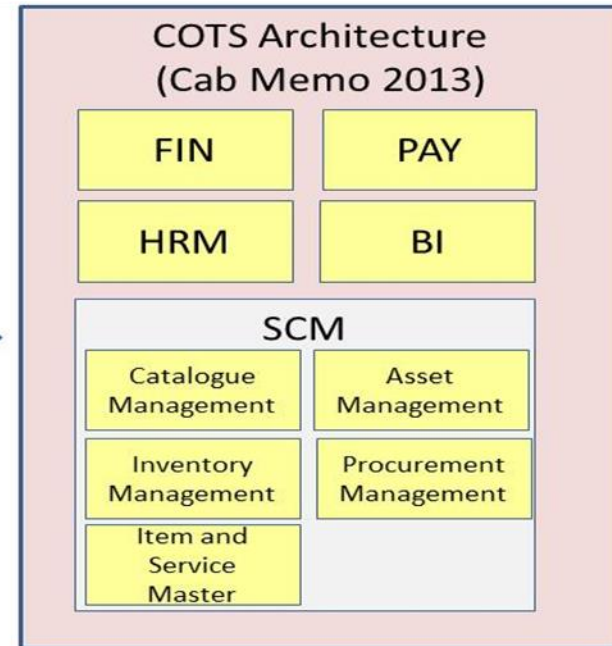
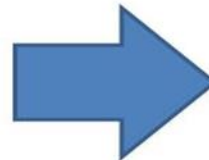
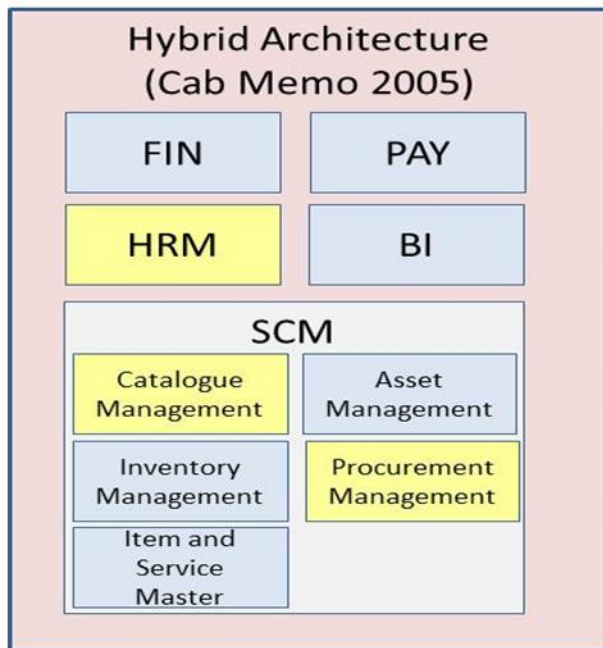
Original IFMS 1 vs. Revised Solution Architecture

IFMS

IFMS I

November 2013

IFMS II



Bespoke (custom developed)



COTS

Why IFMS?

IFMS

Business improvements

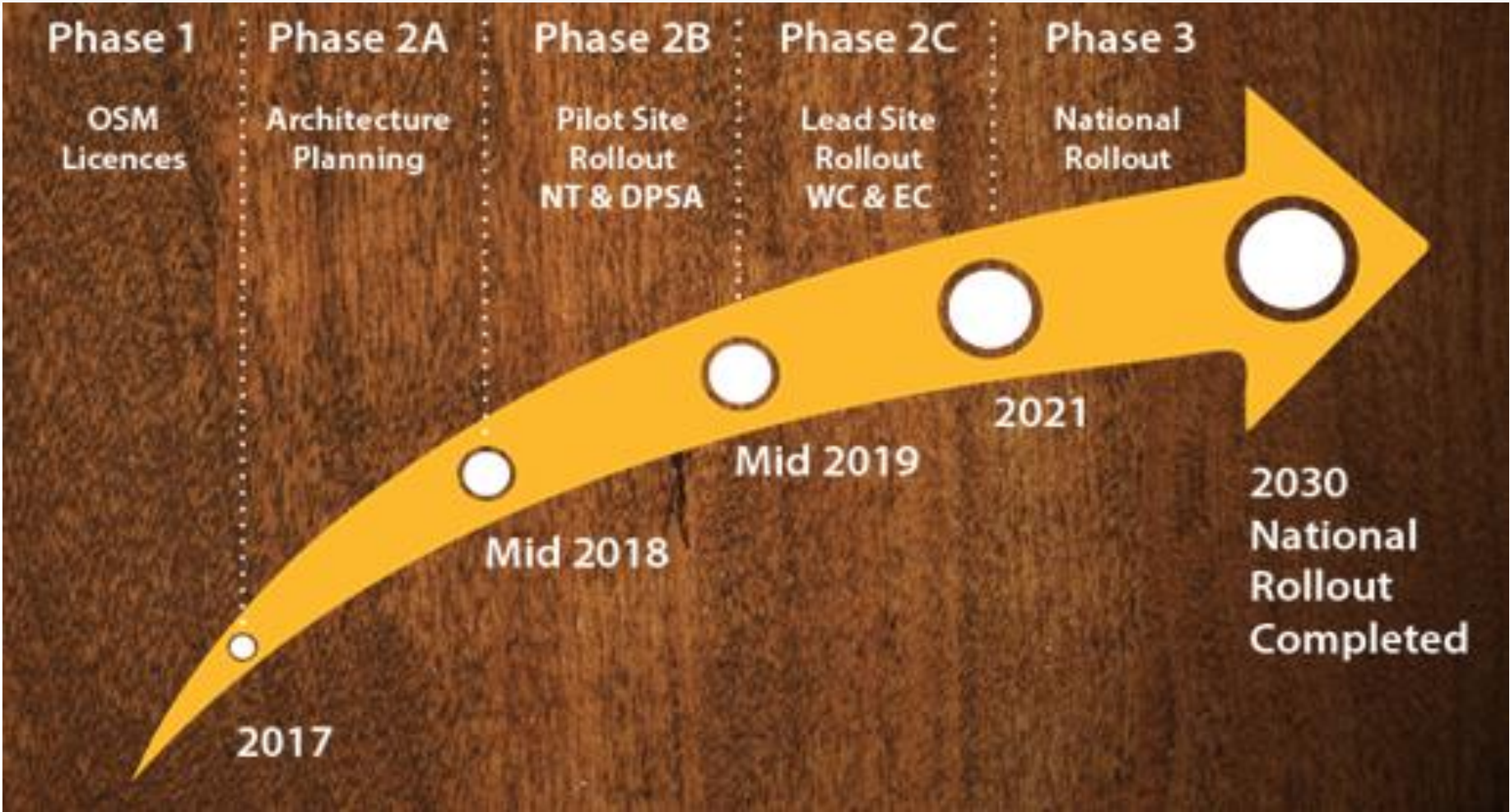
- To facilitate ongoing financial, supply chain and human resource management improvements and reforms.
- To process and compile data in ways that improve availability of quality information for planning, reporting and better decision making.
- To utilize new features that modern technology presents such as employee self service.
- To take advantage of global lessons learned in the management of public resources.

Technology modernization

- To replace ageing technology.
- To avoid increasing costs of maintaining obsolete transverse legacy systems.

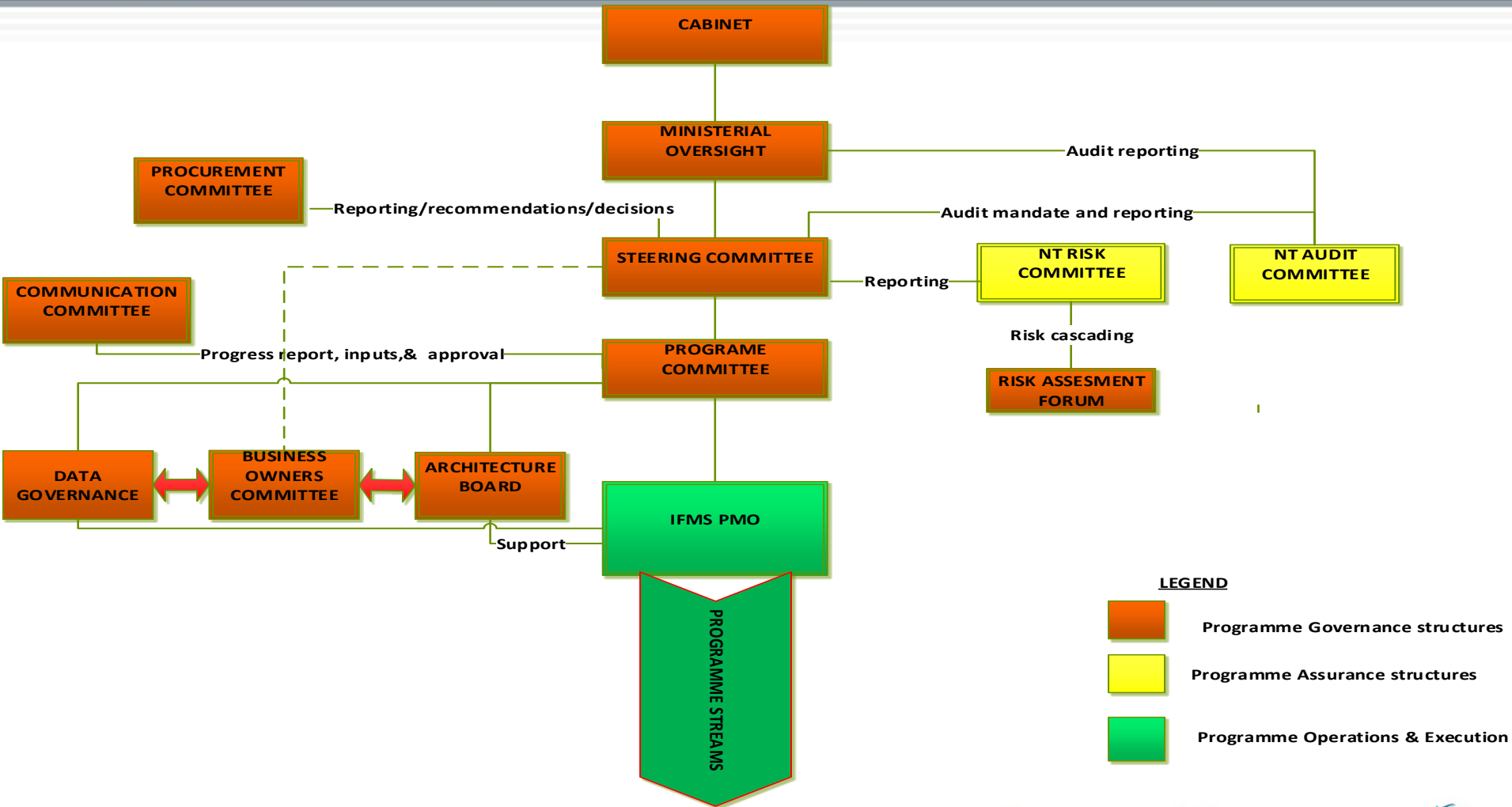
Programme Roadmap

IFMS



IFMS Programme Governance

IFMS



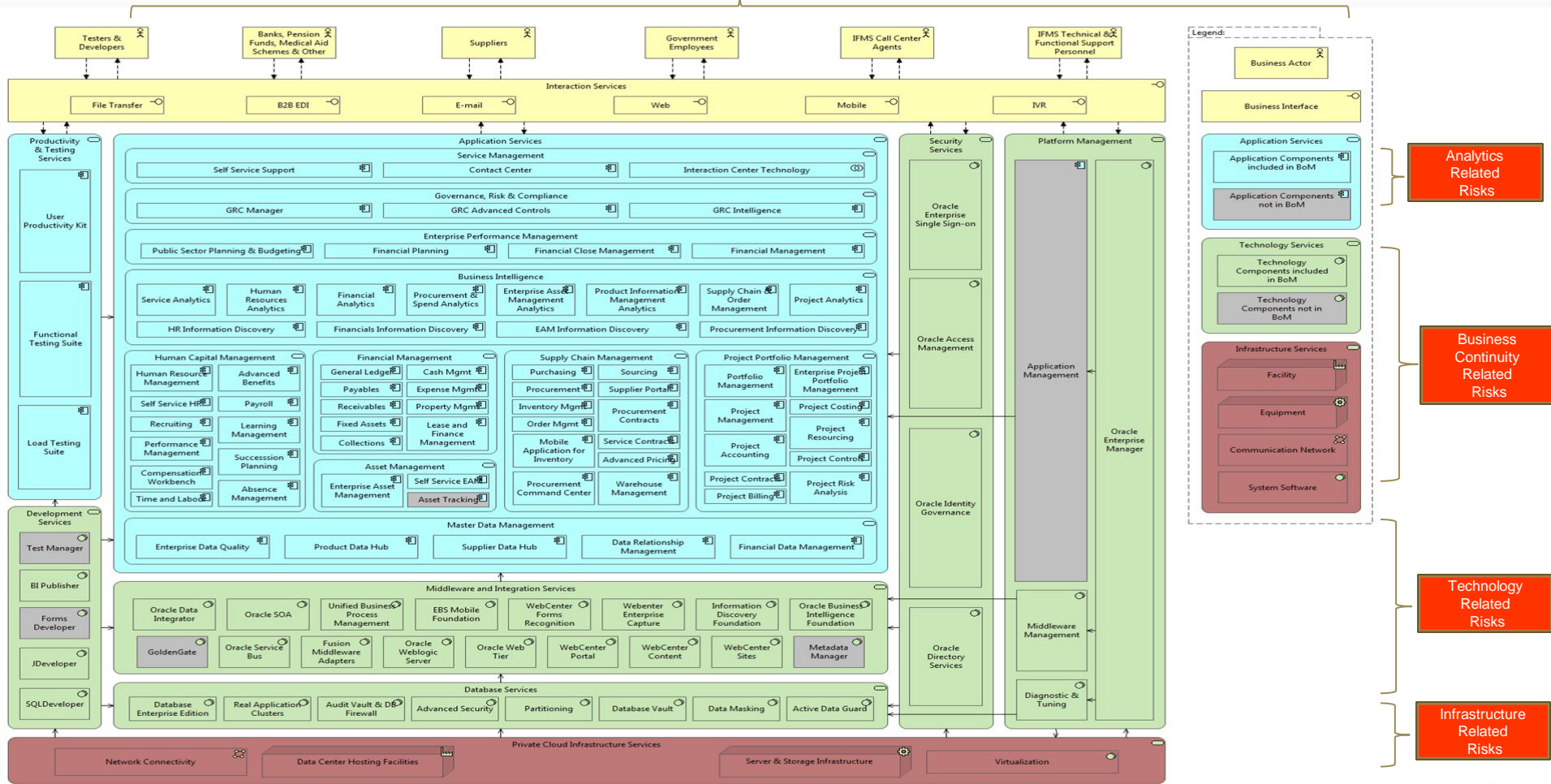
LEGEND

- Programme Governance structures
- Programme Assurance structures
- Programme Operations & Execution

IFMS Conceptual Architecture and Related Risks

IFMS

Project Implementation Risks



Manage System Isolation Requirements

Network – Bandwidth

Connectivity Challenges

Network Security

Disaster Recovery

Identity and Access Management

Programme Integration Factory
Skilled Resources for Building Integration
from Department Core Systems
Identity and Access Management
Content Management

Business Policy Impact

Business Processes Impact

Business Procedure Impact

Organisation Structure Impact

Job Role Impact

BI- Vulindlela

Reporting Data Requirements

Project Implementation Related Risks

IFMS

Project Implementation Governance

Skilled Resources

Project Risks Managed By Project Team

Alignment of Project Risks to Department

Risk Structures

Thank You